

7

CONTROL AND INSTRUMENT BUILDING

In this reinforced concrete building are located the control rooms, control equipment and data recording instruments for six research sites. The data recording instruments are also used by five other sites.

Over 13,500 electrical lines are contained in the instrument and control cables that can be seen entering the building.

Since no personnel are permitted in the test site during research operations, all test sites have to be remotely controlled and closed circuit television systems are used so that the test operators can visually observe the research tests which are taking place a quarter-of-a-mile away.

13 CONTROL AND INSTRUMENT BUILDING

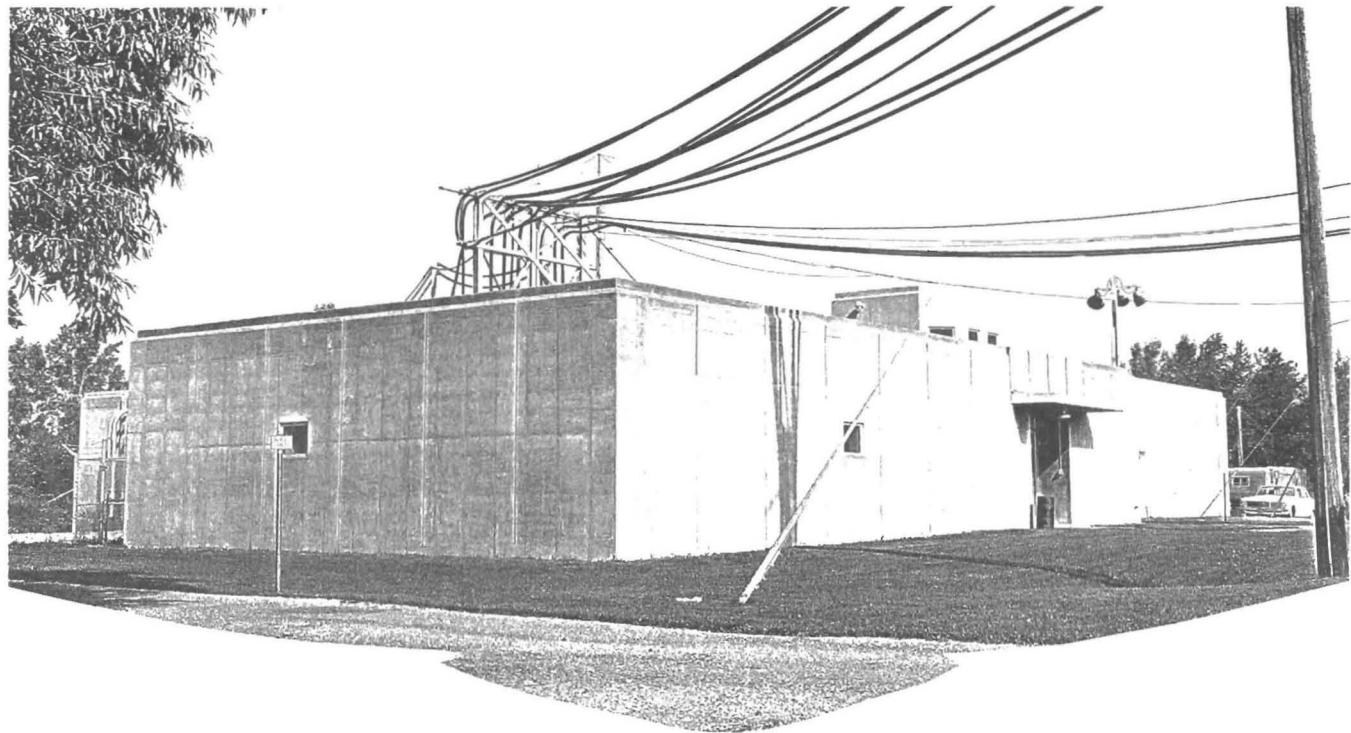
This building is the control and instrument area for four research facilities:

Hypersonic Tunnel Facility

Nuclear Rocket Engine Dynamics Facility

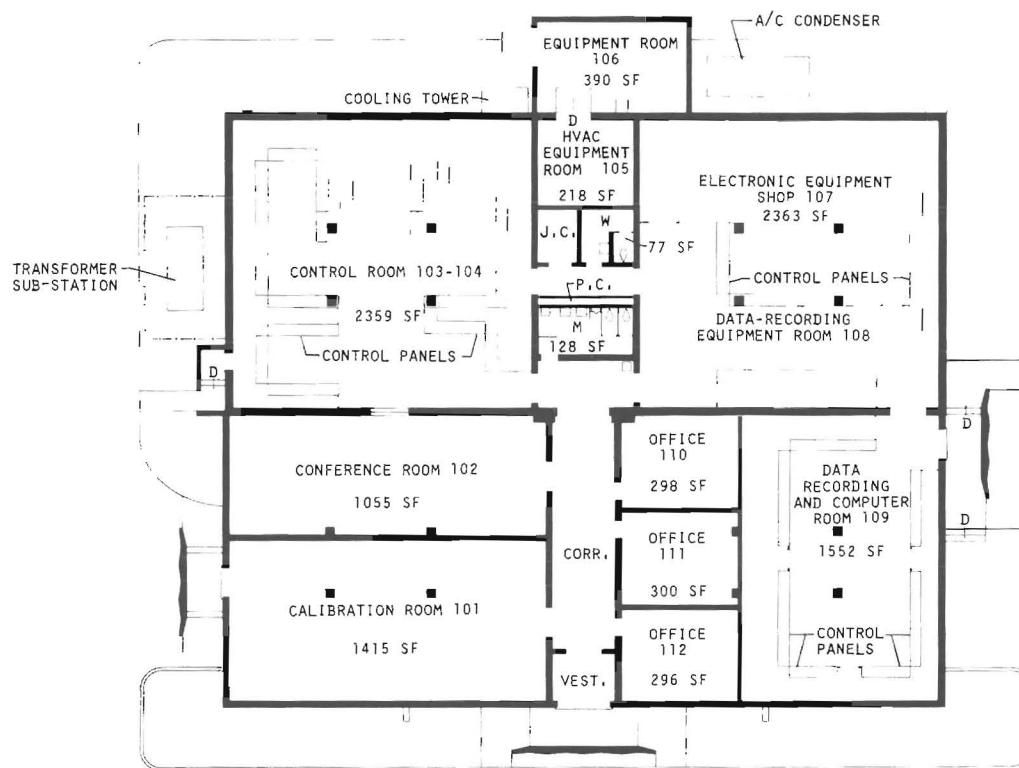
Spacecraft Propulsion Facility

High Energy Rocket Engine Research Facility



NASA LEWIS RESEARCH CENTER - PLUM BROOK STATION
SANDUSKY, OHIO

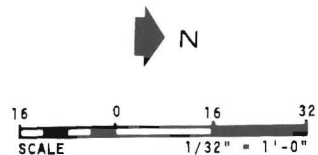
JANUARY, 1969

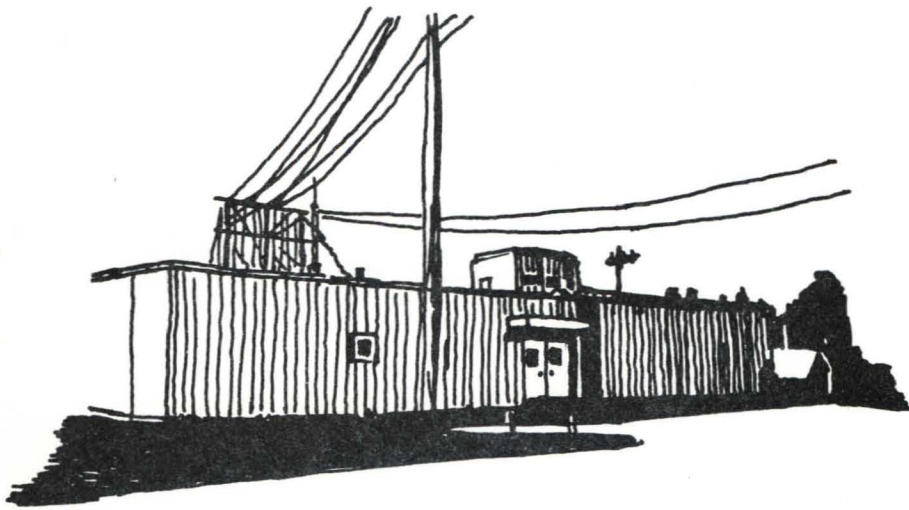


REF. DRWGS. PF-22201, PF-22206 & PF-22321

H CONTROL AND DATA BUILDING

BUILDING NO.
5412





13

CONTROL AND INSTRUMENT
BUILDING

This building is the control and instrument area for
four new facilities:

Hydrogen Heat Transfer Facility

Nuclear Rocket Engine Dynamics Facility

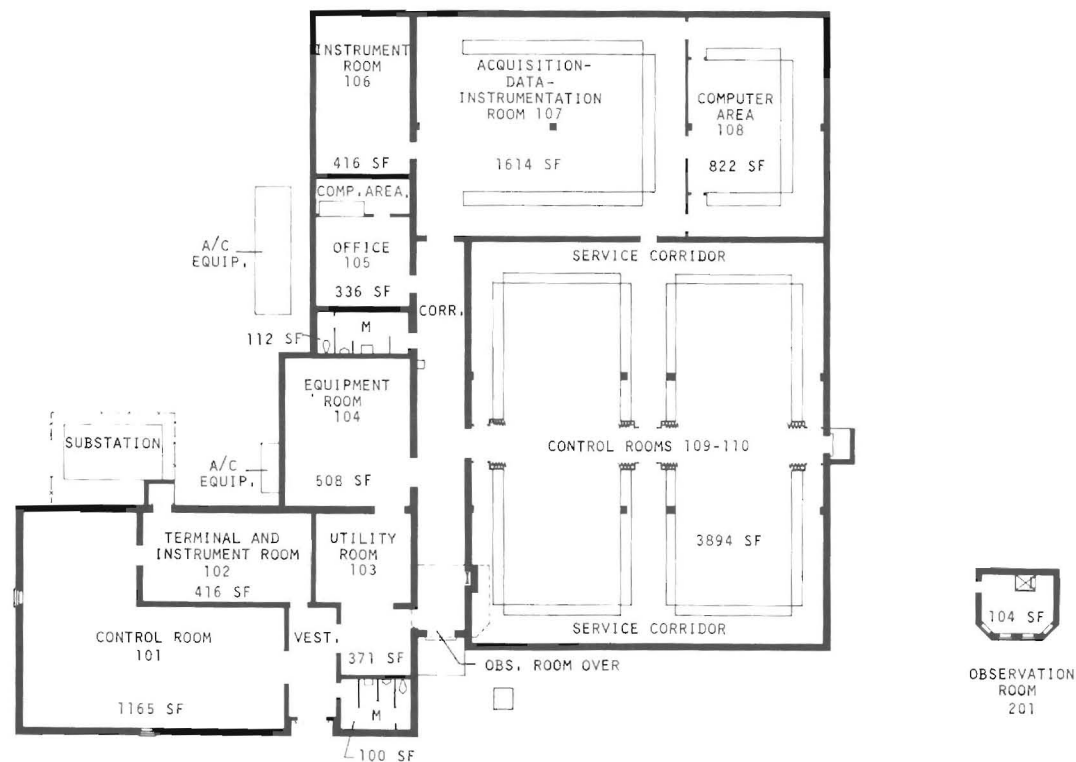
Spacecraft Propulsion Facility

High Energy Rocket Engine Research Facility

JANUARY, 1969

NASA LEWIS RESEARCH CENTER - PLUM BROOK STATION
SANDUSKY, OHIO

6.07
5411



FIRST FLOOR

REF. DRWG. CF-148005

B CONTROL AND DATA BUILDING

BUILDING NO.
5411

